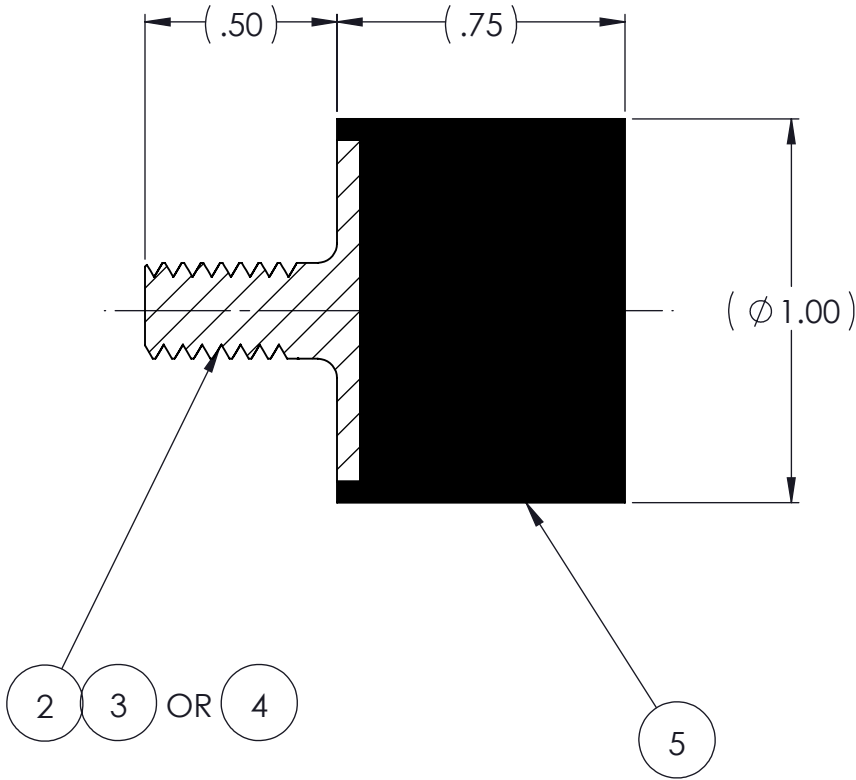
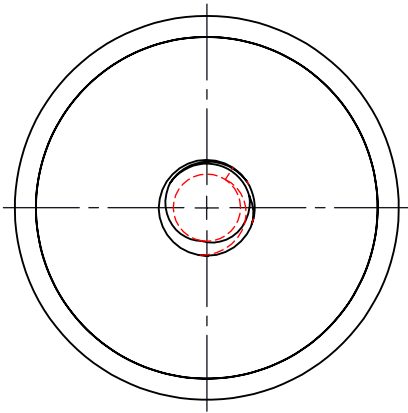
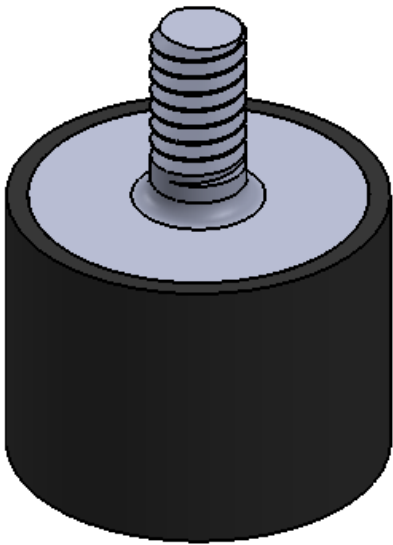


REVISIONS			
REV.	DESCRIPTION	DATE	APPROVED
1	INITIAL RELEASE OF DRAWING	8/8/2014	BS




NOTES:

- 1 MATERIAL: ELASOMER AND DUROMETER OF 40, 50, 60 OR 70 TO BE SPECIFIED.
- 2 ALL DIMENSIONS ARE REFERENCE.
- 3 AVAILABLE WITH THREADS OF 1/4-20 UNC X 1/2", 1/4-20 UNC X 3/4" AND M6 X 1.0 X 1/2".

AR	ELASTOMER	K147-6	1	5
1	MK470-M6	MK470-M6		4
1	MK470-AM	MK470-AM		3
1	MK470-AA	MK470-AA		2
	K147	K147		1
QTY.	DESCRIPTION	PART NUMBER	MATERIAL OR NOTES	ITEM

PROPRIETARY AND CONFIDENTIAL THE INFORMATION CONTAINED IN THIS DRAWING IS THE SOLE PROPERTY OF KARMAN RUBBER. ANY REPRODUCTION IN PART OR AS A WHOLE WITHOUT THE WRITTEN PERMISSION OF KARMAN RUBBER IS PROHIBITED.	SIGNATURE		DATE	UNLESS OTHERWISE SPECIFIED: DIMENSIONS ARE IN INCHES TOLERANCES: .X = .XX = ± 0.031 .XXX = ANGLES = ± 1° INTERPRET GEOMETRIC TOLERANCING PER: ASME Y14.5M-1994
	DRAWN	B. SENECAL	08/08/2014	
	CHECK	S. BROWN	08/08/2014	
	ENGR	B. SENECAL	08/08/2014	
	QA			
	STRESS			
	APPR			



KARMAN RUBBER
VIBRO-INSULATORS®
FOR CONTROLLING NOISE, SHOCK & VIBRATION

SIZE	CAGE CODE
B	
DO NOT SCALE DRAWING	

TITLE: K147 SERIES VIBRO-INSULATOR WWW.KARMAN.COM			
DWG. NO. K147		REV 1	
SCALE: 2:1	WEIGHT:085 OZ.	SHEET 1 OF 1	